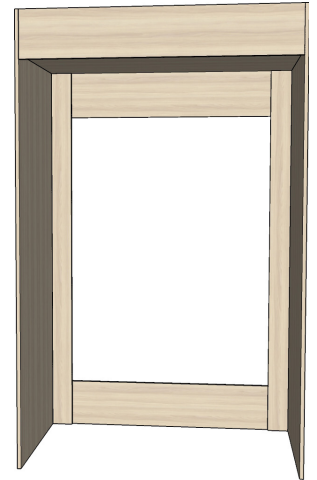


Quickloc Cooler Cabinet Assembly Instructions

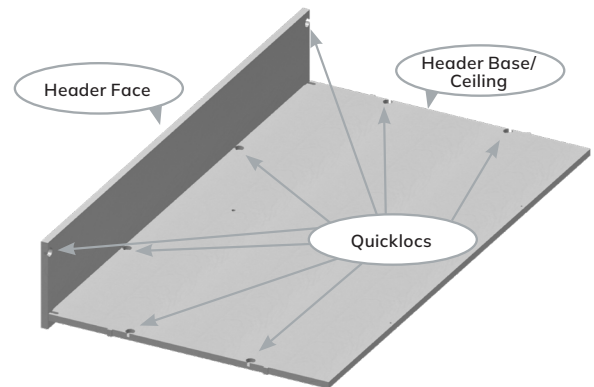
What's Included?

- Left End Panel
- Right End Panel
- Header Face
- Header Base/Ceiling
- Quicklocs
- 2 Horizontal Back Support Braces
- 2 Vertical Back Support Braces



Step 1: Assemble Header

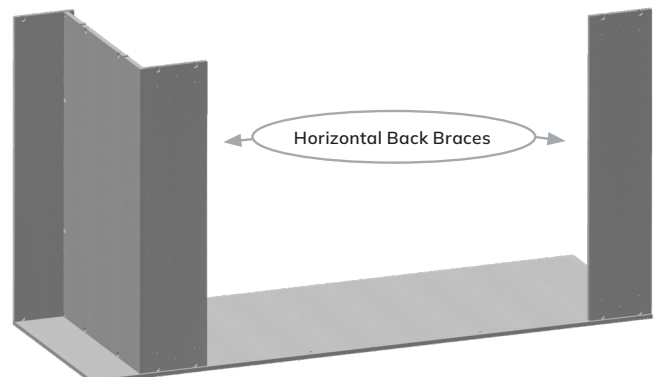
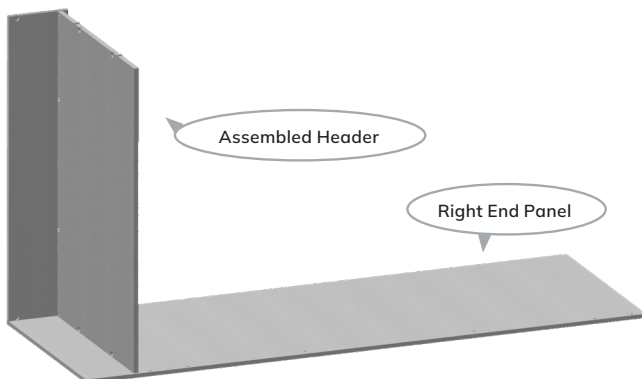
- Install header face onto header base/ceiling
- Clean any debris from the drilled holes to ensure Quicklocs tighten properly)
- Tighten quicklocs with Phillips-head screwdriver until snug (approx. 90°).



These Quickloc connectors are meant to be permanent, not to be removed and reinstalled. Please be careful when installing. Do not over tighten.

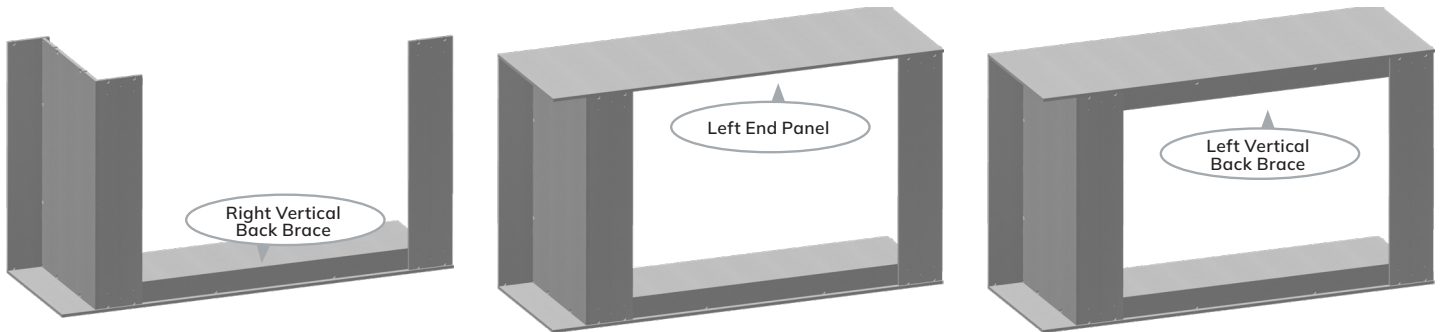
Step 2: Install Header and Right Back Brace

- Lay the right end panel on the floor with the drilled holes facing up
- Clean any debris from the drilled holes to ensure Quicklocs tighten properly
- Place assembled header onto right end panel, aligning the Quicklocs carefully
- Place horizontal back braces on top of the assembly, aligning the Quicklocs carefully
- Gravity should do most of the work, but press panels onto the assembly
- Tighten Quicklocs with Phillips-head screwdriver until snug (approx. 90°); **do not over tighten**



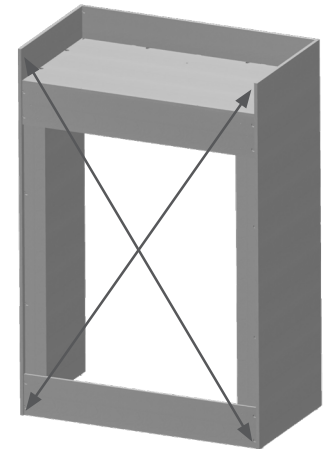
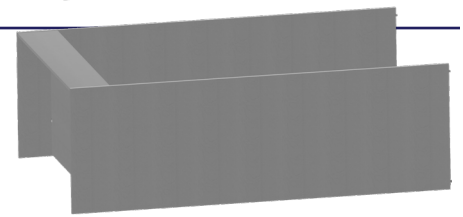
Step 3: Install Remaining Panel and Back Braces

- Install Right Vertical Back Brace
- Tighten Quicklocs with Phillips-head screwdriver until snug (approx. 90°); **do not over tighten**
- Install Left End Panel
- Tighten Quicklocs with Phillips-head screwdriver until snug (approx. 90°); **do not over tighten**
- Install Right Vertical Back Brace
- Tighten Quicklocs with Phillips-head screwdriver until snug (approx. 90°); **do not over tighten**



Step 4: Square Cabinet and Set Upright

- Check Quicklocs to ensure they are tightened before lifting
- Rotate cabinet so that the back is lying flat on the floor then stand it upright
- Square the cabinet: use a tape measure to measure the distance from one corner to the corner on the diagonal; repeat the process for the remaining two corners; ensure the measurements are identical
- 1-1/4" button head screws are included in the hardware pack and pilot holes are drilled into the back braces to secure the cabinet after assembly



Finishing Touches and Slide into Place

Gently slide into place. **These cabinets will be large and heavy so use caution and assistance to push the combined sections against the wall. Be sure to keep the panels from buckling while moving. As a last step of any installation, please ensure all panels, walls, cabinets, and coolers are braced securely. We strive to include all necessary instructions and hardware, but it is the responsibility of the installer to ensure the cabinetry has been secured properly.**

Genesis Décor
Creating Breakroom Environments

Contact Us:

Wil Arrington, Director of Sales
804-561-4844
wilarrington@genesisdecor.com

Learn More:

Visit GenesisDecor.com to find out more about our various cabinetry lines, graphics, and color options.